



November 1, 2022

VALUECOORDINATES II

Interactive Card





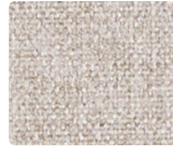
FEDORA
621-056 Dew



FEDORA
621-016 Charcoal



FEDORA
621-006 Bitumen



FEDORA
621-046 Light Grey



FEDORA
621-017 Fawn



FIJI
458-007 Creme



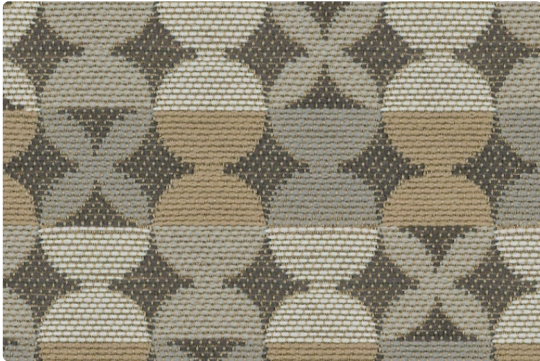
SYDNEY
456-007 Oatmeal



JIVE
461-007 Alabaster



RUMBA
462-007 Bisque



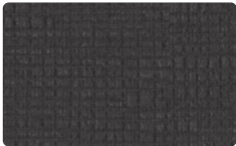
TANGO
460-006 Flint



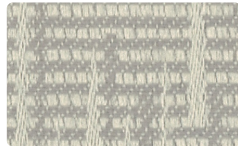
HAVANA
459-007 Oatmeal



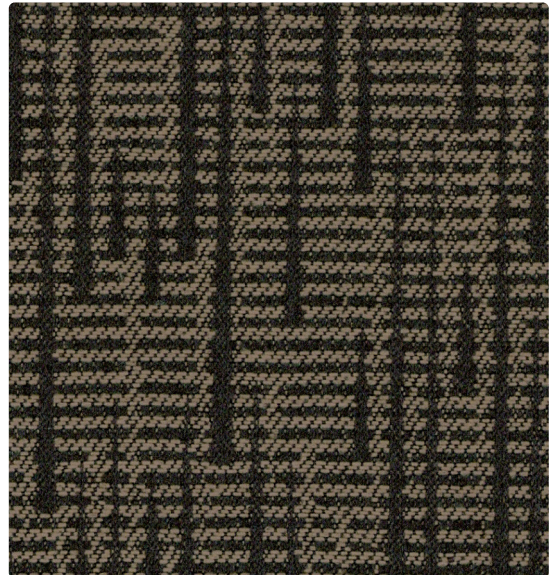
SYDNEY
456-017 Butterscotch



ENGRAVE
634-016 Pewter



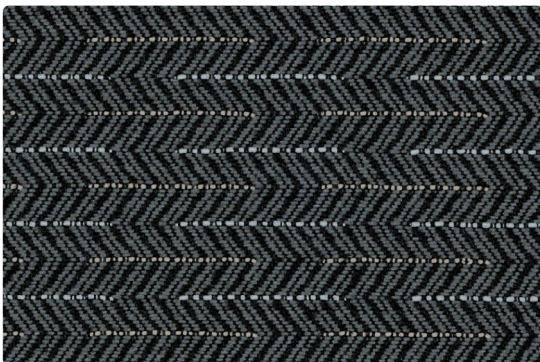
RUMBA
462-006 Abalone



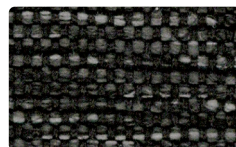
RUMBA
462-016 Char



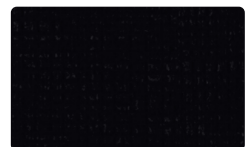
FIJI
458-016 Charcoal



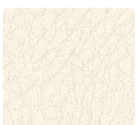
JIVE
461-006 Smoke



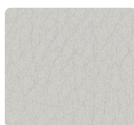
HAVANA
459-016 Storm



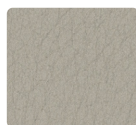
ENGRAVE
634-006 Onyx



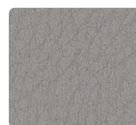
NOBLE
NB-047 White



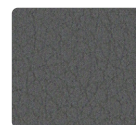
NOBLE
NB-056 Folkstone



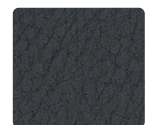
NOBLE
NB-036 Dove



NOBLE
NB-026 Greige



NOBLE
NB-046 Charcoal



NOBLE
NB-006 Onyx

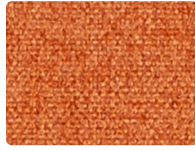
Additional colors are available. Please refer to the Mayer Fabrics website.



FEDORA
621-000 Mink



FEDORA
621-002 Topaz



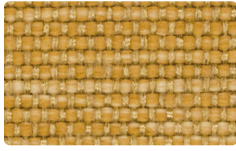
FEDORA
621-019 Tangelo



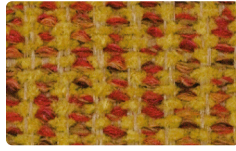
FEDORA
621-009 Persimmon



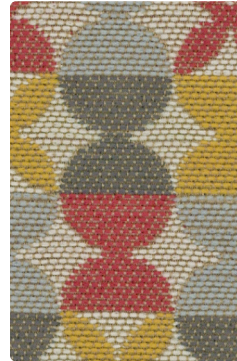
FEDORA
621-001 Ruby



HAVANA
459-002 Saffron



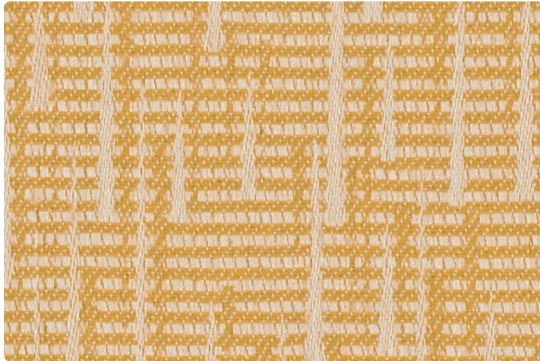
FIJI
458-002 Goldenrod



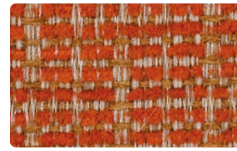
TANGO
460-011 Coral



ENGRAVE
634-019 Papaya



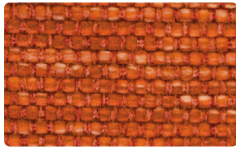
RUMBA
462-002 Butterscotch



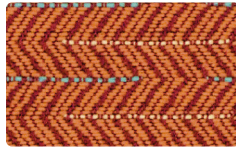
SYDNEY
456-009 Tangerine



FIJI
458-009 Cinnamon



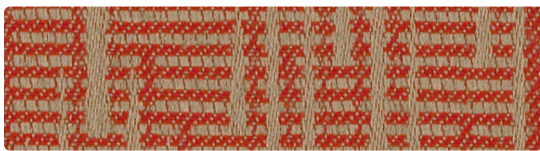
HAVANA
459-009 Mandarin



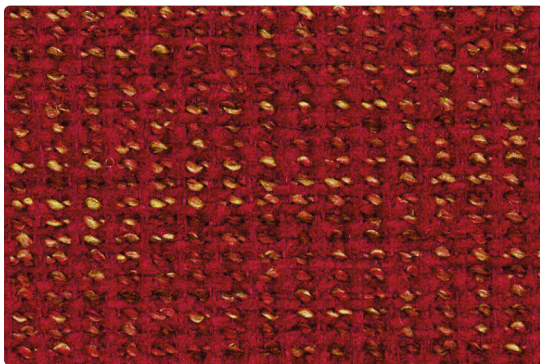
JIVE
461-009 Mango



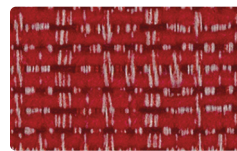
TANGO
460-001 Sangria



RUMBA
462-009 Cinnabar



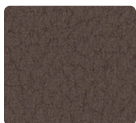
FIJI
458-001 Wine



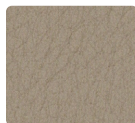
SYDNEY
456-001 Crimson



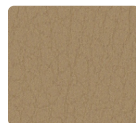
ENGRAVE
634-001 Scarlet



NOBLE
NB-000 Java



NOBLE
NB-067 Stone



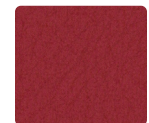
NOBLE
NB-017 Camel



NOBLE
NB-019 Spice



NOBLE
NB-009 Apricot

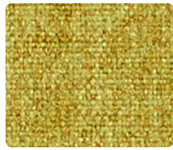


NOBLE
NB-001 Paprika

Additional colors are available. Please refer to the Mayer Fabrics website.



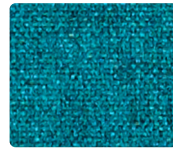
FEDORA
621-023 Eucalyptus



FEDORA
621-013 Citron



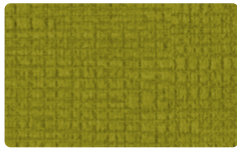
FEDORA
621-043 Aquamarine



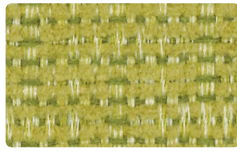
FEDORA
621-053 Aegean



FEDORA
621-014 Indigo



ENGRAVE
634-003 Apple



SYDNEY
456-013 Citrus



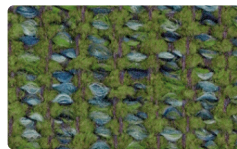
HAVANA
459-003 Meadow



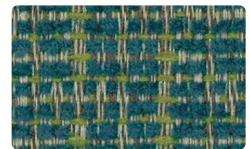
RUMBA
462-003 Lime



TANGO
460-013 Limeade



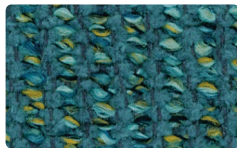
FIJI
458-013 Evergreen



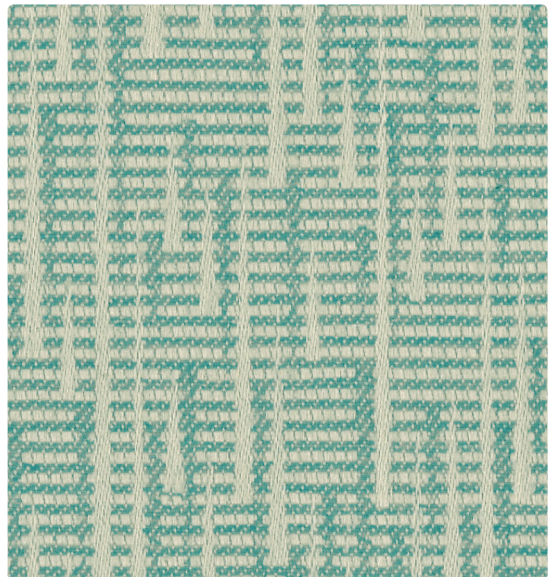
SYDNEY
456-023 Pine



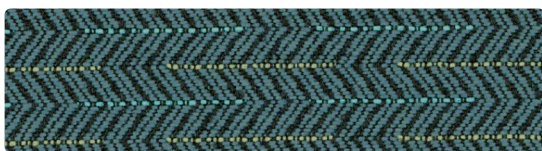
HAVANA
459-014 Peacock



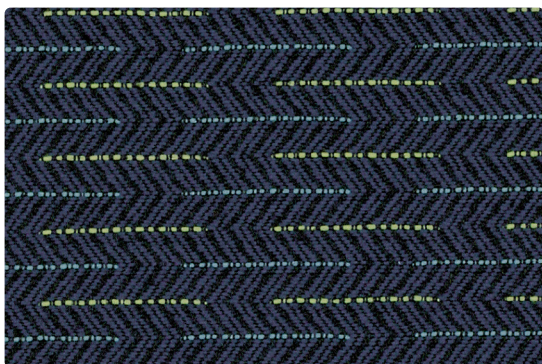
FIJI
458-014 Grotto



RUMBA
462-013 Spa



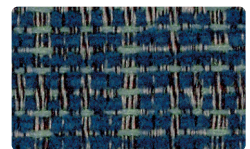
JIVE
461-014 Aegean



JIVE
461-004 Midnight



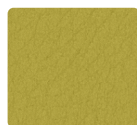
ENGRAVE
634-004 Indigo



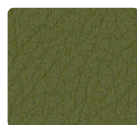
SYDNEY
456-004 Ocean



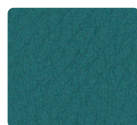
NOBLE
NB-002 Dijon



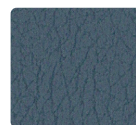
NOBLE
NB-013 Citrus



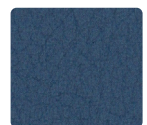
NOBLE
NB-003 Basil



NOBLE
NB-014 Teal

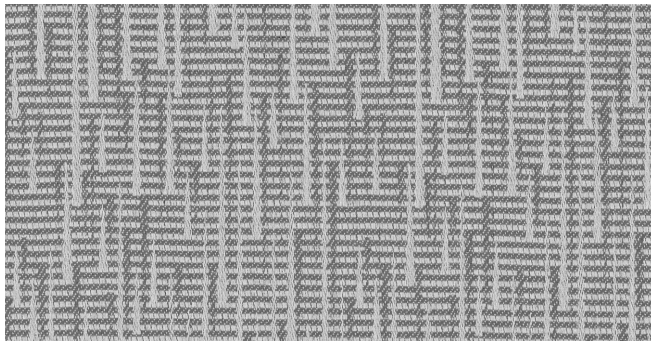


NOBLE
NB-024 Blue Fog

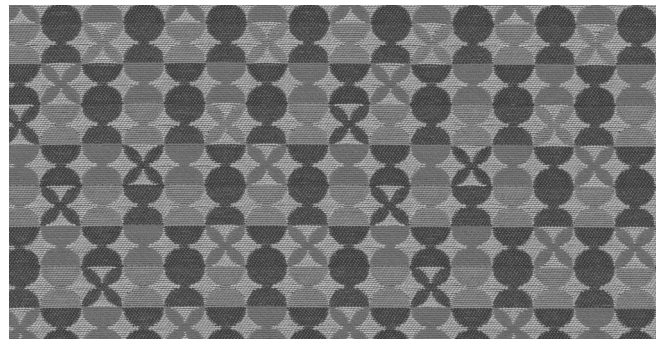


NOBLE
NB-004 Indigo

Additional colors are available. Please refer to the Mayer Fabrics website.



RUMBA – Repeat: 3.7" H, 6.625" V Random March



TANGO – Repeat: 4.8" H, 4.8" V

TECHNICAL INFORMATION

Value Coordinates II | Interactive Card

Pattern 54"	Content and Backing	Certifications	Weight/ Linear Yd.	Pattern Repeat	Finish	Abrasion Wyzenbeek	Light- Fastness	Flammability	Cleaning Code
ENGRAVE <i>Directional</i>	100% Polyester Backing: Polyester	GREENGUARD Gold	15.68 oz.	None	Nanotex®	100,000^ Double Rubs	40 hours	Cal. 117-2013 NFPA 260/UFAC Class 1	W
FEDORA <i>Directional</i> <i>Multi-use*</i>	100% Polyester Backing: Polyester	GREENGUARD Gold	17.2 oz.	None	Stain Repellent - PFOA Free	100,000^ Double Rubs	40 hours	Cal. 117-2013 NFPA 260/UFAC Class 1 ASTM E84 (Unadhered) Class 1 or A	W
FUJI <i>Directional</i>	61% Polyester, 39% Olefin Backing: Acrylic	GREENGUARD Gold	17.184 oz.	0.906" H, 0.406" V Non- Matching	Nano-Stain Repellent - PFOA & PFOS Free	60,000^ Double Rubs	40 hours	Cal. 117-2013 NFPA 260/UFAC Class 1	WS, BC
HAVANA <i>Directional</i>	70% Polypropylene, 30% Polyester Backing: Latex	GREENGUARD Gold, OEKO-TEX® Certified	16.04 oz.	None	Inherently Cleanable (refer to mayerfabrics.com/vivalife)	100,000^ Double Rubs	40 hours	Cal. 117-2013 NFPA 260/UFAC Class 1	W, BC, IC
JIVE <i>Directional</i>	100% Polyester Backing: Acrylic	GREENGUARD Gold	12.43 oz.	1.2" H, 0.4" V	Stain Repellent - PFOA & PFOS Free	82,000^ Double Rubs	40 hours	Cal. 117-2013 NFPA 260/UFAC Class 1	S
NOBLE	78% Vinyl face, 22% Polyester backing	GREENGUARD	30 oz.	None	Soil & Stain Resistant Top Coat with Ink Resistant Technology	100,000^ Double Rubs	300 hours	Cal. 117-2013 NFPA 260/UFAC Class 1 FMVSS 302	BC, CFC
RUMBA <i>Directional</i>	100% Polyester Backing: Acrylic	GREENGUARD Gold	10.97 oz.	3.7" H, 6.625" V Random Match	Stain Repellent - PFOA & PFOS Free	55,000^ Double Rubs	40 hours	Cal. 117-2013 NFPA 260/UFAC Class 1	S
SYDNEY <i>Directional</i>	52% Recycled Polyester (34% Pre-/18% Post- Consumer), 48% Polyester Backing: Acrylic	GREENGUARD Gold	13.44 oz.	0.938" H, 0.842" V Non- Matching	Nano-Stain Repellent - PFOA & PFOS Free	63,000^ Double Rubs	40 hours	Cal. 117-2013 NFPA 260/UFAC Class 1	WS, BC
TANGO <i>Directional</i>	100% Polyester Backing: Acrylic	GREENGUARD Gold	17.27 oz.	4.8" H, 4.8" V	Stain Repellent - PFOA & PFOS Free	80,000^ Double Rubs	40 hours	Cal. 117-2013 NFPA 260/UFAC Class 1	S

REDUCED ENVIRONMENTAL IMPACT

These products are GREENGUARD Certified or GREENGUARD Gold Certified for low chemical and particle emissions to UL standard UL 2818 and may contribute to LEED certification.

Fedora, Noble
No FR/Antimicrobial/Antibacterial Additives

Havana
OEKO-TEX® Certified

CARE AND CLEANING INFORMATION

S: Solvent W: Water-Based Cleaner WS: Water/Solvent Cleaner IC: Inherently Cleanable

CFC: Coated Fabrics Cleaning – Refer to Mayer website for complete cleaning info.

Bleach Cleanable – 1 part bleach, 9 parts water = 10% bleach, 90% water solution. **Do not clean/disinfect fabric for longer than 10 minutes using the 10% bleach solution. Always rinse promptly with clean water after applying the bleach solution. Failure to do so will void any and all warranties.**

DYE TRANSFER DISCLAIMER

Certain clothing and accessory dyes (such as those used on denim jeans) may migrate to lighter colors. This phenomenon is increased by humidity and temperature and is irreversible. Mayer Fabrics will not assume responsibility for dye transfer caused by external contaminants. Please check compatibility when using this product in combination with painted or varnished surfaces.

ADDITIONAL INFORMATION

*Abrasion test results exceeding ACT Performance Guidelines are not an indicator of product lifespan. Multiple factors affect fabric durability and appearance retention.

*A multi-use fabric that can be used for upholstery, panels, wrapped walls, and acoustic.

Warranty: Please refer to the Mayer website for warranty information by pattern.

Custom Colors: All patterns can be custom colored. Minimum yardage applies.

Digital Swatch Card Color Matching: Due to color variations on different monitors and color printers, actual swatch colors may vary slightly. Please request a memo sample from Mayer Fabrics to ensure proper color representation.

Complete and current product information available at mayerfabrics.com.



These fabrics meet or exceed these ACT performance guidelines.
*Certification Marks owned by ACT®

**Fedora, Jive,
Rumba, Tango**



**Water and Stain
Repellent Finish**

Fedora



This 100% polyester fabric is included in the Underwriter's Laboratory Fabric Recognition Program. Additional testing of this U.L. recognized component is not required on approved panels from participating manufacturers.

©2021
VC21CD 51122



Pattern	Grade	Pattern	Grade
ENGRAVE	4	NOBLE	4
FEDORA	5	RUMBA	3
FUJI	3	SYDNEY	3
HAVANA	5	TANGO	4
JIVE	4		

MAYER FABRICS