



OCEANA Seating datasheet

Soft Seating Armless Models:

Models 3121, 3122, 3123

Common Dimensions:

Overall Depth	27.75"
Overall Height	31"
Seat Depth	19.5"
Seat Height	17.75"

Lounge Model 3121:

Overall Width	22"
Seat Width	22"
Product Weight	36 lbs
Shipping Cube	16 ft ³

Love Seat Model 3122:

Overall Width	48.5"
Seat Width	48.5"
Product Weight	62 lbs
Shipping Cube	36 ft ³

Sofa Model 3123:

Overall Width	71.5"
Inside Seat Width	71.5"
Product Weight	74 lbs
Shipping Cube	51 ft ³

Soft Seating Arm Models:

Models 3101, 3102, 3103, 3111, 3112, and 3113

Common Dimensions:

Overall Depth	27.75"
Overall Height	31"
Seat Depth	19.5"
Seat Height	17.75"
Arm Height from Seat	9.5"

Lounge Models 3101, 3111:

Overall Width	27"
Seat Width	22"
Product Weight	44 lbs
Shipping Cube	19 ft ³

Love Seat Models 3102, 3112:

Overall Width	53.5"
Seat Width	48.5"
Product Weight	70 lbs
Shipping Cube	39 ft ³

Sofa Models 3103, 3113:

Overall Width	76.5"
Inside Seat Width	71.5"
Product Weight	82 lbs
Shipping Cube	54 ft ³

Features:

- Engineered 18mm Birch frame
- Field replaceable seat, back and arms
- Chrome, black or silver leg options
- Wood Tablet Arm Option available for both Arm and Armless Models.
- High-resilient long lasting polyfoam
- Optional clean-out
- Power Unit Option (2 USB, 1 Plug)

Warranty:

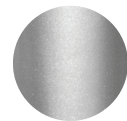
- 10 year warranty on frame, 3 years on Fabric, Suspension and Foam
- Warranty applies only to single shift, standard commercial usage (8 hours/day, 5 days/week)

Leg Finishes:

Standard OCI Seating finishes



C - Chrome



S - Silver



B - Black

Contact sales representative for more information.

Optional Fabrics:

Available in a range of graded fabrics and vinyls from group 1 - 8. Choose from Momentum, Mayer, CF Stinson and more available upon request. Also available in Leather.

Fabric Requirements Armless:

Lounge:

COM: 2 yds. COL: 33 Sq. Ft.

Love Seat:

COM: 3.5 yds. COL: 69 Sq. Ft.

Sofa:

COM: 5 yds. COL: 104 Sq. Ft.

Fabric Requirements w/Arms:

Lounge:

COM: 3.75 yds. COL: 74 Sq. Ft.

Love Seat:

COM: 5.5 yds. COL: 110 Sq. Ft.

Sofa:

COM: 7 yds. COL: 145 Sq. Ft.

Construction:

Seat:

- Plywood Seat frame: .75" thick, 7 ply
- Steel inserts provide metal-to-metal connections to other components
- Synthetic woven webbing seat suspension system

Back:

- Plywood Back frame: .75" thick, 7 ply
- Steel inserts provide metal-to-metal connections to other components
- Synthetic woven seat suspension system

Construction (continued):

Arms:

- Plywood Arm frame: .75" thick, 7 ply
- Non-Woven suspension system behind foam cushion
- Fastened to base using metal-to-metal connections

Legs:

- Welded 14 gauge rectangular tubular steel
- Polypropylene non-marking glides
- Fastened using metal-to-metal connections

Upholstery:

Seat:

- Can be upholstered in fabric, vinyl, leather or leather/faux leather combination
- Seat bottom is sealed with liner

Arms and Back:

- Can be upholstered in fabric, vinyl, or leather

Foam:

Seat:

- 3.5" thick HR foam
- 1" Memory foam topper

Back:

- 3" thick back foam
- Density: 1.8

Arms:

- Arm foam is .25" thick on sides of arms.
- Arm foam is .5" thick on top, front and back of arms.
- Density: 1.5 lbs

Product Durability:

- Designed for an active weight capacity of 300 lbs per seat
- Meets and exceeds all testing standards for safety and durability
- Manufactured in the U.S.A. under stringent quality standards

Fire Rating:

- All fabric and foam is tested and certified, meeting California Technical Bulletin 117 (CAL 117) standards

Environmental:

- All foam is produced without using any ozone depleting chloroflouro chemicals.
- All wood used is TSCA compliant to help reduce and or eliminate formaldehyde emissions.

Shipping:

The Instint Line is delivered pre assembled by the OCI Team of assemblers, bagged and wrapped for protection. Ships in a carton or blanket wrapped where available.

Please visit OCISeating.com for more information.