



BREEZE Seating
datasheet

Soft Seating:

Models 2301, 2302, 2303

Common Dimensions:

Overall Depth	24"
Overall Height	28"
Seat Depth	20.5"
Seat Height	17.5"
Arm Height	26.5"

Lounge Single Seat Model 2301:

Overall Width	32"
Seat Width	24"
Product Weight	55 lbs
Shipping Cube	26.5 ft ³

Love Seat Two Seat Model 2302:

Overall Width	53"
Seat Width	45"
Product Weight	85 lbs
Shipping Cube	44 ft ³

Sofa Three Seat Model 2303:

Overall Width	74"
Seat Width	60"
Product Weight	95 lbs
Shipping Cube	58 ft ³

Optional Fabrics:

Available in a range of graded fabrics and vinyls from group 1 - 8. Choose from Momentum, Mayer, CF Stinson and more available upon request. Also available in Leather.

Fabric Requirements:

Lounge:

COM: 4.25 yds COL: 76.5 ft²

Love Seat:

COM: 6 yds COL: 108 ft²

Sofa:

COM: 7.75 yds COL: 139.5 ft²

Features:

- Lounge, Love Seat and Sofa Models
- 8" raised legs allow for easy cleaning
- Complementing tables available
- Metal Legs available in Chrome, Silver, and Black.
- Power Unit Option available

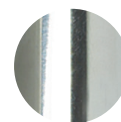
Warranty:

- 10 year warranty on frame, 3 years on Fabric, Suspension and Foam
- Warranty applies only to single shift, standard commercial usage (8 hours/day, 5 days/week)

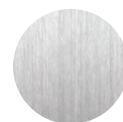
Leg Finishes:

Standard

Optional



C - Chrome



S - Silver



B - Black

Contact sales representative
for more information.



Construction:

Seat:

- Plywood Seat frame: .75" thick, 7 ply
- Steel inserts provide metal-to-metal connections to other components
- Synthetic woven webbing seat suspension system

Back:

- Plywood Back frame: .75" thick, 7 ply
- Steel inserts provide metal-to-metal connections to other components
- Synthetic woven seat suspension system

Arms:

- Plywood Arm frame: .75" thick, 7 ply
- Non-Woven suspension system behind foam cushion
- Fastened to base using metal-to-metal connections

Legs:

- Welded 14 gauge rectangular tubular steel
- Polypropylene non-marking glides
- Fastened using metal-to-metal connections

Upholstery:

Seat:

- Can be upholstered in fabric, vinyl, leather or leather/faux leather combination
- Seat bottom is sealed with liner

Arms and Back:

- Can be upholstered in fabric, vinyl, or leather

Foam:

Seat:

- 3.5" thick HR foam
- 1" Memory foam topper
- Density: 2.5
- ILD: 35

Back:

- 3" thick back foam
- Density: 1.8
- ILD: 25

Arms:

- Arm foam is .5" thick on top and sides of arms.
- Arm foam is .25" thick on front and back of arms.
- Density: 1.5 lbs
- ILD: 45

Product Durability:

- Designed for an active weight capacity of 300 lbs per seat
- Meets and exceeds all applicable testing standards for safety and durability
- Manufactured in the U.S.A. under stringent quality standards

Fire Rating:

- All fabric and foam is tested and certified, meeting California Technical Bulletin 117 (CAL 117) standards

Environmental:

- All foam is produced without using any ozone depleting chloroflouro chemicals.
- All wood used is TSCA compliant to help reduce and or eliminate formaldehyde emissions.

Shipping:

The Breeze Line is delivered pre assembled by the OCI Team of assemblers, bagged and wrapped for protection. Ships in a carton or blanket wrapped where available.

Please visit ociseating.com for additional product information.

