



MASSO Occasional Tables

datasheet

Table Top Shapes

Square:

TMK222217 22 W x 22 D x 17 H
Product Weight: 16 lbs
Shipping Cube: 8 ft³

TMK222220 22 W x 22 D x 20 H
Product Weight: 18 lbs
Shipping Cube: 8 ft³

TMK303017 30 W x 30 D x 17 H
Product Weight: 30 lbs
Shipping Cube: 14 ft³

TMK303020 30 W x 30 D x 20 H
Product Weight: 32 lbs
Shipping Cube: 14 ft³

Round:

TMK2217 22 Dia x 17 H
Product Weight: 16 lbs
Shipping Cube: 8 ft³

TMK2220 22 Dia x 20 H
Product Weight: 18 lbs
Shipping Cube: 8 ft³

TMK3017 30 Dia x 17 H
Product Weight: 30 lbs
Shipping Cube: 14 ft³

TMK3020 30 Dia x 20 H
Product Weight: 32 lbs
Shipping Cube: 14 ft³

Rectangular:

TMK482017 48 W x 20 D x 17 H
Product Weight: 35 lbs
Shipping Cube: 14.6 ft³

Features:

- Square, Round & Rectangular top shapes
- Designed to coordinate with Masso Seating Line
- Laminate and Veneer top material options
- Laminate and Veneer tops are .75" thick
- Laminate available in 6 standard colors
- For custom Laminate or Veneer options pre-approval is required. Please contact customer service.
- Veneer available in all standard OCI finishes on Maple. Please refer to our website for current veneer colors
- Standard laminate top finishes comes standard with matching PVC edge color
- For veneer tops, edge will match top finish color, unless specified
- Square metal legs available in 3 standard finishes Chrome, Silver and Black
- All dimensions are nominal
- Tables available in 17" and 20" heights
- Refer to terms and conditions for general information, finishes, warranty, freight and complete terms and condition of sales and more.

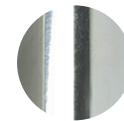
Warranty:

- All Masso tables are warranted from defects in material and workmanship for a period of 10 years from date of purchase to original purchase only

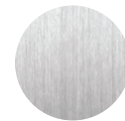
Contact sales representative for more information.

Base Finishes:

Standard



C - Chrome



S - Silver



B - Black

Optional

Standard Laminate Finishes:



White



Black



Fog



Bleached Legno



Millennium Oak



Weathered Ash

PVC Edge Colors:

PVC Edge color to match Standard Laminate Finishes



OC
SEATING

Construction:

Table Top:

- Veneer tops made of .75" plywood consisting of MDF crossbands and veneer core interior plywood for added strength and lighter weight. Table edges are natural stained exposed plywood sealed with epoxy.
- Laminate tops are made of .75 PB core with a PVC edge to match laminate.

Base:

- Welded 14 gauge 1" square steel tubular base frame
- Polypropylene non-marking glides
- Fastened using metal-to-metal connections

Product Durability:

- Meets and exceeds all testing standards for safety and durability
- Designed and assembled in the U.S.A under strict quality standards

Environmental:

- All wood used is TSCA compliant to help reduce and or eliminate formaldehyde emissions.

Shipping:

The Masso Line is delivered pre assembled by the OCI Team of assemblers, bagged and wrapped for protection. Ships in a carton or blanket wrapped where available.

Please visit ociseating.com for additional product information.

