



## **DESIGN ESSENTIALS**

MAY 1, 2021

**MOMENTUM**  
T E X T I L E S



CANTER SAND DOLLAR



QUARRY



EARTH



STORM



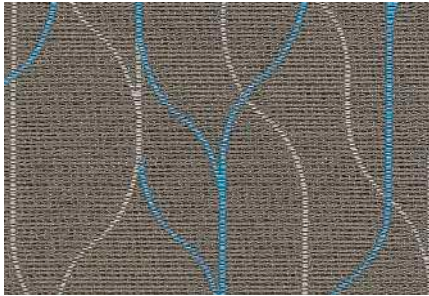
INK



TEAL GREEN



ONYX



SWIM BISCAI



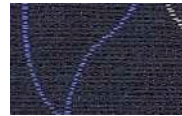
SANDSTONE



CRIMSON



EARTHEN



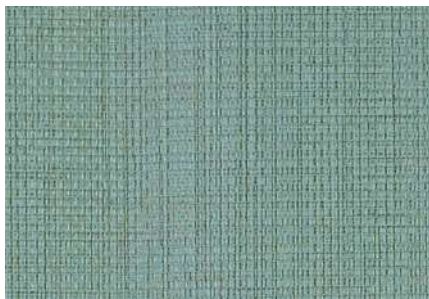
INK



RIVERBANK



CALDERA



BEELINE EPU GEYSER



FOSSIL



ORIOLE



JETTY



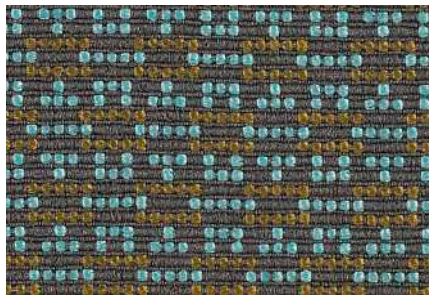
PORTOBELLO



TIDAL



ECLIPSE



BOBBY AQUA



LEMON



MOSS



FUCHSIA



GLOW



IRIS



ANCHOR



ORIGIN STEEL



EUREKA



GAIA



ARUNDEL



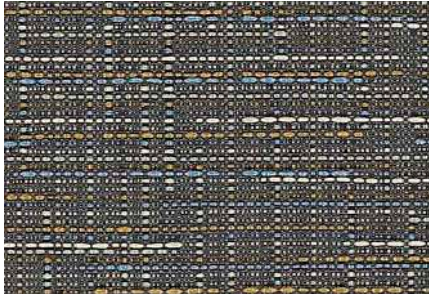
POPPY



SAPPHIRE



JET



GUILD LONDON



CELADON



EARTHEN



DOVER



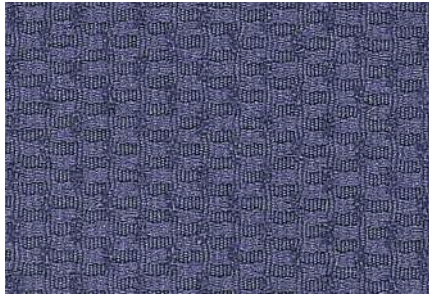
INDIGO



GARNET



SHALE



WIDGET BAJA



FOG



PERIDOT



BEDROCK



BRISTOL



JUNIPER



GRAPHITE



LENS GRAPHITE



SAND



NAVY



CRIMSON



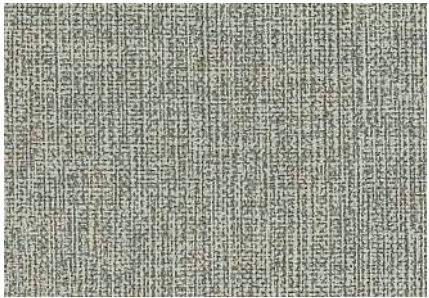
SILVER



TERRA



NIGHT



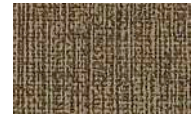
WHIT EPU CASTLE



SMITH



OCEAN



DRIFTWOOD



ZEPHYR



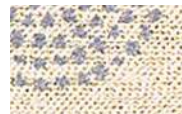
NIGHTFALL



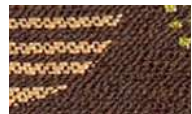
FLINT



AMUSE ADMIRAL



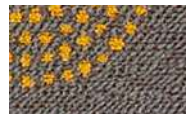
QUARTZ



MOCHA



POPPY



ALLOY

# TECHNICAL INFORMATION

Width - Pattern	Fiber Content & Backing	Abrasion (D.R.)	Lightfastness	Approx. Repeats	Cl. Code
56" AMUSE ☞ ▲ ✱ ☪ ☆*	61% Post Consumer Recycled Polyester 39% Polyester Acrylic Backing	50,000	40 Hrs. Class 4	6 1/8" L, 7 1/2" W	WS
54" BEELINE EPU ☞ ▲ ✱ ☪ ☆*	100% EPU Polyurethane Polyester Backing	900,000	200 Hrs. Class 4		W BC (4:1)
54" BOBBY ☞ ▲ ✱ ☪ ☆*	68% Repreve Post Consumer Recycled Polyester, 32% Polyester Acrylic Backing	150,000	40 Hrs. Class 3.5	7/8" L, 1/2" W	WS
54" CANTER EPU ☞ ▲ ✱ ☪ ☆*	100% EPU Polyurethane Polyester Backing	1,000,000	200 Hrs. Class 4		W BC (4:1)
54" GUILD ☞ ▲ ✱ ☪ ☆*	71% Post Consumer Recycled Polyester, 29% Polyester Latex Backing	90,000	40 Hrs. Class 4.5		WS
56" LENS ☞ ▲ ✱ ☪ ☆*	81% Repreve Post Consumer Recycled Polyester, 19% Recycled Polyester Acrylic Backing	110,000	40 Hrs. Class 4.5	10" L, 7 1/2" W	W
58" ORIGIN ☞ ▲ ✱ ☪ ☆*	100% Post Consumer Recycled Polyester Acrylic Backing	282,000	40 Hrs. Class 4		WS
54" SWIM ☞ ▲ ✱ ☪ ☆*	65% Recycled Polyester, 35% Polyester Acrylic Backing	50,000	40 Hrs. Class 4.5	6 3/4" L, 7 1/2" W	WS
54" WHIT EPU ☞ ▲ ✱ ☪ ☆*	100% EPU Polyurethane Polyester Backing	500,000	200 Hrs. Class 4		W BC (4:1)
54" WIDGET ☞ ▲ ✱ ☪ ☆*	83% Post Consumer Recycled Polyester, 17% Post Industrial Recycled Polyester	100,000	40 Hrs. Class 4	1/2" L, 1/4" W	WS

\*ACT® Registered Certification Marks

All Patterns meet California Bulletin 117-2013.  
Primary Application: Upholstery Seating

## EXPLANATION OF ACT ICONS FOR UPHOLSTERY

### FIRE RETARDANCY

Flammability testing determined as fabric's resistance to burning.



**PASSES**  
California 117-2013

### COLORFASTNESS TO WET & DRY CROCKING

Colorfastness to wet & dry crocking refers to the rubbing off of color from the fabric onto clothing, hands or other materials and can occur under wet or dry conditions.



**PASSES**  
AATCC 8-1974 Dry Crocking, Class 4 minimum; Wet Crocking, Class 3 minimum

### COLORFASTNESS TO LIGHT

Colorfastness to light is the degree to which fabric will retain its color when exposed to light.



**PASSES**  
AATCC 16A-1974 or AATCC 16E-1976; Class 4 minimum at 40 hours  
NOTE: Class 4 minimum at 60 hours is recommended for direct sunlight exposure situations

### PHYSICAL PROPERTIES

3 physical property tests include: brush pill test to determine a fabric's pilling. Breaking/tensile strength is the ability of a fabric to withstand tension without breaking or tearing. Seam slippage is the pulling apart of fabrics at the seams.



**PASSES**  
Brush Pill ASTM D3511, 3-4 minimum  
Breaking Strength ASTM D3597-D1682-64 (1975) 50 lbs. minimum in warp & weft  
Seam Slippage ASTM D3597-D434-75 25 lbs. minimum in warp & weft

### ABRASION

Abrasion is the ability of a fabric to withstand damage from wear and rubbing. There is a general contract specification as well as a heavy duty specification.



**PASSES**  
General Contract ASTM 3597 modified (#10 cotton duck); 15,000 double rubs Wyzenbeek Method



Heavy Duty ASTM 3597 modified (#10 cotton duck); 30,000 double rubs Wyzenbeek Method or ASTM D4966 (with 21 oz. weight); 40,000 rubs Martindale Method

### CLEANING CODE DEFINITIONS

W: Water-based foam or cleaner.

WS: Water-based cleaning agents or foam.

BC: Bleach Cleanable.



GREENGUARD Certified. CA Section 01350 compliant.  
Eligible for CHPS Low-Emitting Material Credits.

**OCI Sitwell**

14815 Radburn Ave.  
Santa Fe Springs, CA 90670  
Phone (562) 802-0464

Email: Sales@ocisitwell.com

Please visit our Website  
www.ocisitwell.com

For memo samples contact:

**MOMENTUM**  
T E X T I L E S

800-366-6839  
memosamples.com