

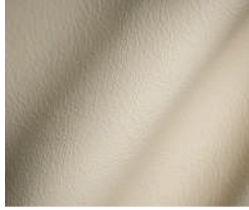
CLASSICO COLLECTION

White



sample

Ivory



sample

Cream



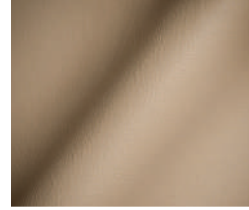
sample

Sandstone



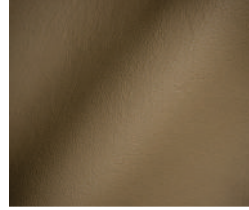
sample

Mocha



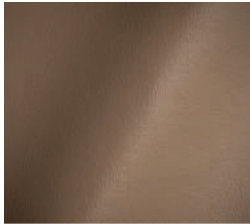
sample

Stone



sample

Taupe



sample

Star



sample

Bamboo



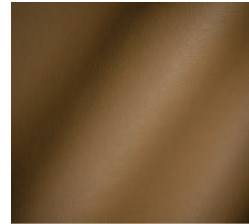
sample

Saddle



sample

Hazelnut



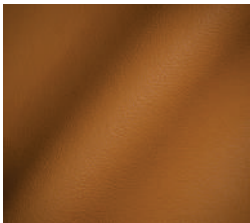
sample

Khaki



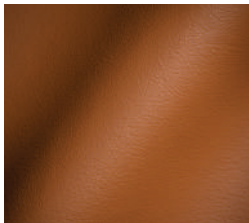
sample

Tan



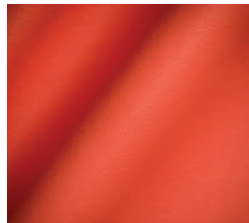
sample

Harness Brown



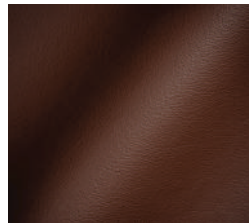
sample

Mango



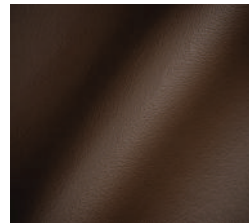
sample

Henna



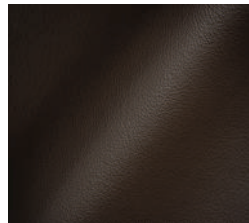
sample

Chocolate



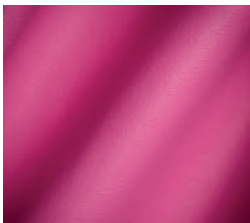
sample

Espresso



sample

Fuchsia



sample

Fire Engine Red



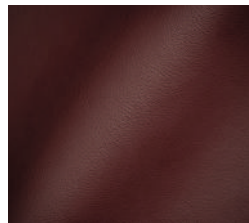
sample

Oxblood



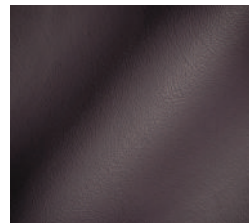
sample

Wine



sample

Plum



sample

lolite



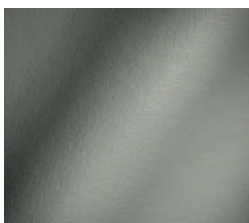
sample

Navy



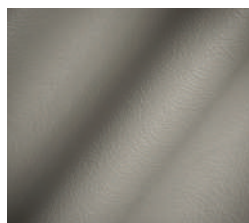
sample

Grey



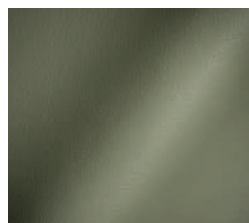
sample

Smoke Grey



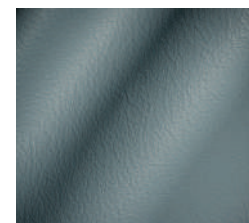
sample

Avocado



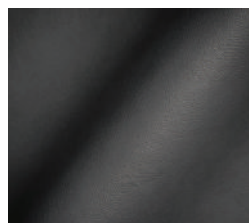
sample

Mist Blue



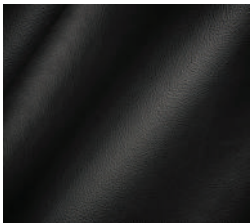
sample

Charcoal



sample

Black



sample

Classico is the "go to leather". It's aniline dyed and has a protective finish to give Classico a smooth, consistent graining and color. Its suppleness is perfect for residential use yet it's unique and durable finish will pass the strictest commercial code.



CLASSICO

PREMIUM LEATHER

SPECIFICATIONS

DESCRIPTION

SUPERIOR SELECT HIDES

SUPER SOFT TANNAGE

ANILINE DYED

AVERAGE HIDE SIZE - 50 SQ. FT

WEIGHT - 2.25 – 2.75 OUNCES PER SQ. FT.

THICKNESS - 0.9 – 1.1 MM

TECHNICAL SPECIFICATIONS

CALIFORNIA TECH BULLETIN 117E

FMVSS 302

CLASSICO COLORS MAYBE TREATED TO PASS FAR 25.853 (A/B)

LEATHER CONVERSION TABLE

1 YD. = 18 S.F.	9 YD. = 162 S.F.	17 YD. = 306 S.F.
2 YD. = 36 S.F.	10 YD. = 180 S.F.	18 YD. = 324 S.F.
3 YD. = 54 S.F.	11 YD. = 198 S.F.	19 YD. = 342 S.F.
4 YD. = 72 S.F.	12 YD. = 216 S.F.	20 YD. = 360 S.F.
5 YD. = 90 S.F.	13 YD. = 234 S.F.	21 YD. = 378 S.F.
6 YD. = 108 S.F.	14 YD. = 252 S.F.	22 YD. = 396 S.F.
7 YD. = 126 S.F.	15 YD. = 270 S.F.	
8 YD. = 144 S.F.	16 YD. = 288 S.F.	

www.ocisitwell.com

14815 Radburn Avenue, Santa Fe Springs, CA 90670

TOLL FREE (866)624-4968 • (562)802-0464 • FAX (866)624-9662