

INSTINT Seating datasheet

Soft Seating Armless Models:

Models 2200, 2201, 2202 & 2203

Common Dimensions:

| | |
|----------------|-------|
| Overall Depth | 30" |
| Overall Height | 32" |
| Seat Depth | 20" |
| Seat Height | 17.5" |

Lounge Single Seat Model 2200:

| | |
|----------------|--------------------|
| Overall Width | 22" |
| Seat Width | 22" |
| Product Weight | 41 lbs |
| Shipping Cube | 16 ft ³ |

Lounge Single Seat

Extended Seat Model 2201:

| | |
|----------------|----------------------|
| Overall Width | 28" |
| Seat Width | 28" |
| Product Weight | 45 lbs |
| Shipping Cube | 23.5 ft ³ |

Love Seat Two Seat Model 2202:

| | |
|----------------|--------------------|
| Overall Width | 49" |
| Seat Width | 49" |
| Product Weight | 72 lbs |
| Shipping Cube | 36 ft ³ |

Sofa Three Seat Model 2203:

| | |
|-------------------|--------------------|
| Overall Width | 70" |
| Inside Seat Width | 70" |
| Product Weight | 88 lbs |
| Shipping Cube | 51 ft ³ |

Soft Seating Arm Models:

Models 2210, 2211, 2212 & 2213

Common Dimensions:

| | |
|----------------------|-------|
| Overall Depth | 30" |
| Overall Height | 32" |
| Seat Depth | 20" |
| Seat Height | 17.5" |
| Arm Height from Seat | 6" |

Lounge Single Seat Model 2210:

| | |
|----------------|--------------------|
| Overall Width | 27" |
| Seat Width | 22" |
| Product Weight | 48 lbs |
| Shipping Cube | 19 ft ³ |

Lounge Single Seat

Extended Seat Model 2211:

| | |
|----------------|----------------------|
| Overall Width | 33" |
| Seat Width | 28" |
| Product Weight | 52 lbs |
| Shipping Cube | 26.5 ft ³ |

Love Seat Two Seat Model 2212:

| | |
|----------------|--------------------|
| Overall Width | 54" |
| Seat Width | 49" |
| Product Weight | 79 lbs |
| Shipping Cube | 39 ft ³ |

Sofa Three Seat Model 2213:

| | |
|-------------------|--------------------|
| Overall Width | 75" |
| Inside Seat Width | 70" |
| Product Weight | 95 lbs |
| Shipping Cube | 54 ft ³ |

Features:

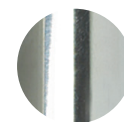
- Lounge, Extended Lounge, Love Seat and Sofa in Arm and Armless Models
- 8" raised legs allow for easy cleaning
- Signature Metal Legs available in Chrome, Silver and Black
- Wood Tablet Arm Option available for both Arm and Armless Models. Tablet Side Stow feature available only on Arm Models.
- Power Unit Option (2 USB, 1 Plug)

Warranty:

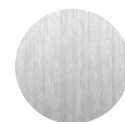
- 10 year warranty on frame, 3 years on Fabric, Suspension and Foam
- Warranty applies only to single shift, standard commercial usage (8 hours/day, 5 days/week)

Leg Finishes:

Standard



C - Chrome



S - Silver

Optional



B - Black

Contact sales representative
for more information.



OG
SEATING

Optional Fabrics:

Available in a range of graded fabrics and vinyls from group 1 - 8. Choose from Momentum, Mayer, CF Stinson and more available upon request. Also available in Leather.

Fabric Requirements Armless:

Lounge:

COM: 2 yds. COL: 33 Sq. Ft.

Lounge Extended Seat:

COM: 2.25 yds. COL: 38 Sq. Ft.

Love Seat:

COM: 3.5 yds. COL: 69 Sq. Ft.

Sofa:

COM: 5 yds. COL: 104 Sq. Ft.

Fabric Requirements w/Arms:

Lounge:

COM: 3.75 yds. COL: 74 Sq. Ft.

Lounge Extended Seat:

COM: 4 yds. COL: 79 Sq. Ft.

Love Seat:

COM: 5.5 yds. COL: 110 Sq. Ft.

Sofa:

COM: 7 yds. COL: 145 Sq. Ft.

Construction:

Seat:

- Plywood Seat frame: .75" thick, 7 ply
- Steel inserts provide metal-to-metal connections to other components
- Synthetic woven webbing seat suspension system

Back:

- Plywood Back frame: .75" thick, 7 ply
- Steel inserts provide metal-to-metal connections to other components
- Synthetic woven seat suspension system

Construction (continued):

Arms:

- Plywood Arm frame: .75" thick, 7 ply
- Non-Woven suspension system behind foam cushion
- Fastened to base using metal-to-metal connections

Legs:

- Welded 14 gauge rectangular tubular steel
- Polypropylene non-marking glides
- Fastened using metal-to-metal connections

Upholstery:

Seat:

- Can be upholstered in fabric, vinyl, leather or leather/faux leather combination
- Seat bottom is sealed with liner

Arms and Back:

- Can be upholstered in fabric, vinyl, or leather

Foam:

Seat:

- 3.5" thick HR foam
- 1" Memory foam topper

Back:

- 3" thick back foam
- Density: 1.8

Arms:

- Arm foam is .5" thick on top and sides of arms.
- Arm foam is .25" thick on front and back of arms.
- Density: 1.5 lbs

Product Durability:

- Designed for an active weight capacity of 300 lbs per seat
- Meets and exceeds all testing standards for safety and durability
- Manufactured in the U.S.A. under stringent quality standards

Fire Rating:

- All fabric and foam is tested and certified, meeting California Technical Bulletin 117 (CAL 117) standards

Environmental:

- All foam is produced without using any ozone depleting chloroflouro chemicals.
- All wood used is TSCA compliant to help reduce and or eliminate formaldehyde emissions.

Shipping:

The Instint Line is delivered pre assembled by the OCI Team of assemblers, bagged and wrapped for protection. Ships in a carton or blanket wrapped where available.

Please visit ociseating.com for additional product information.

