



MASSO Seating
datasheet

Soft Seating

Models 2001, 2002 & 2003

Common Dimensions:

Overall Depth	32"
Overall Height	34"
Seat Depth	20.5"
Seat Height	17.5"
Arm Height from Seat	10.5"

Lounge Single Seat Model 2001:

Overall Width	35"
Inside Seat Width	22"
Product Weight	68 lbs
Shipping Cube	24.80 ft ³

Love Seat Two Seat Model 2002:

Overall Width	61"
Inside Seat Width	48"
Product Weight	97 lbs
Shipping Cube	42.70 ft ³

Sofa Three Seat Model 2003:

Overall Width	82"
Inside Seat Width	69"
Product Weight	127 lbs
Shipping Cube	57.16 ft ³

Contact sales representative for more information.

Features:

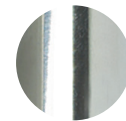
- Lounge, Love Seat and Sofa Models
- 6" raised legs allow for easy cleaning
- Complementing tables available
- Metal Base available in Chrome, Silver and Black
- Wood Tablet Option available in solid wood
- Power Unit Option (2 USB, 1 Plug)

Warranty:

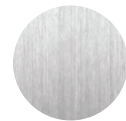
- 10 year warranty on frame, 3 years on Fabric, Suspension and Foam
- Warranty applies only to single shift, standard commercial usage (8 hours/day, 5 days/week)

Base Finishes:

Standard



C - Chrome



S - Silver

Optional



B - Black

Optional Fabrics:

Available in a range of graded fabrics and vinyls from group 1 - 8. Choose from Momentum, Mayer, CF Stinson and more available upon request. Also available in Leather.

Fabric Requirements:

Lounge:

COM: 4.25 yds. COL: 80 Sq. Ft.

Love Seat:

COM: 6 yds. COL: 120 Sq. Ft.

Sofa:

COM: 7.75 yds. COL: 155 Sq. Ft.



Construction:

Seat:

- Plywood Seat frame: .75" thick, 7 ply
- Steel inserts provide metal-to-metal connections to other components
- Synthetic woven webbing seat suspension system

Back:

- Plywood Back frame: .75" thick, 7 ply
- Steel inserts provide metal-to-metal connections to other components
- Synthetic woven seat suspension system

Arms:

- Plywood Arm frame: .75" thick, 7 ply
- Non-Woven suspension system behind foam cushion
- Fastened to base using metal-to-metal connections

Base:

- Welded 14 gauge 1" square steel tubular base frame
- Polypropylene non-marking glides
- Fastened using metal-to-metal connections

Upholstery:

Seat:

- Can be upholstered in fabric, vinyl, leather or leather/faux leather combination
- Cushions are fixed to prevent removal (for public spaces)
- Seat bottom is sealed with liner

Arms and Back:

- Can be upholstered in fabric, vinyl, or leather

Foam:

Seat:

- 4.5" thick HR foam
- 1" Memory foam topper

Back:

- 3" thick back foam
- Density: 1.8

Arms:

- Arm foam is .5" thick on top and sides of arms.
- Arm foam is .25" thick on front and back of arms.
- Density: 1.5 lbs

Product Durability:

- Designed for an active weight capacity of 300 lbs per seat
- Meets and exceeds all testing standards for safety and durability
- Manufactured in the U.S.A. under stringent quality standards

Fire Rating:

- All fabric and foam is tested and certified, meeting California Technical Bulletin 117 (CAL 117) standards

Environmental:

- All foam is produced without using any ozone depleting chloroflouro chemicals.
- All wood used is TSCA compliant to help reduce and or eliminate formaldehyde emissions.

Shipping:

The Masso Line is delivered pre assembled by the OCI Team of assemblers, bagged and wrapped for protection. Ships in a carton or blanket wrapped where available.

Please visit ociseating.com for additional product information.

